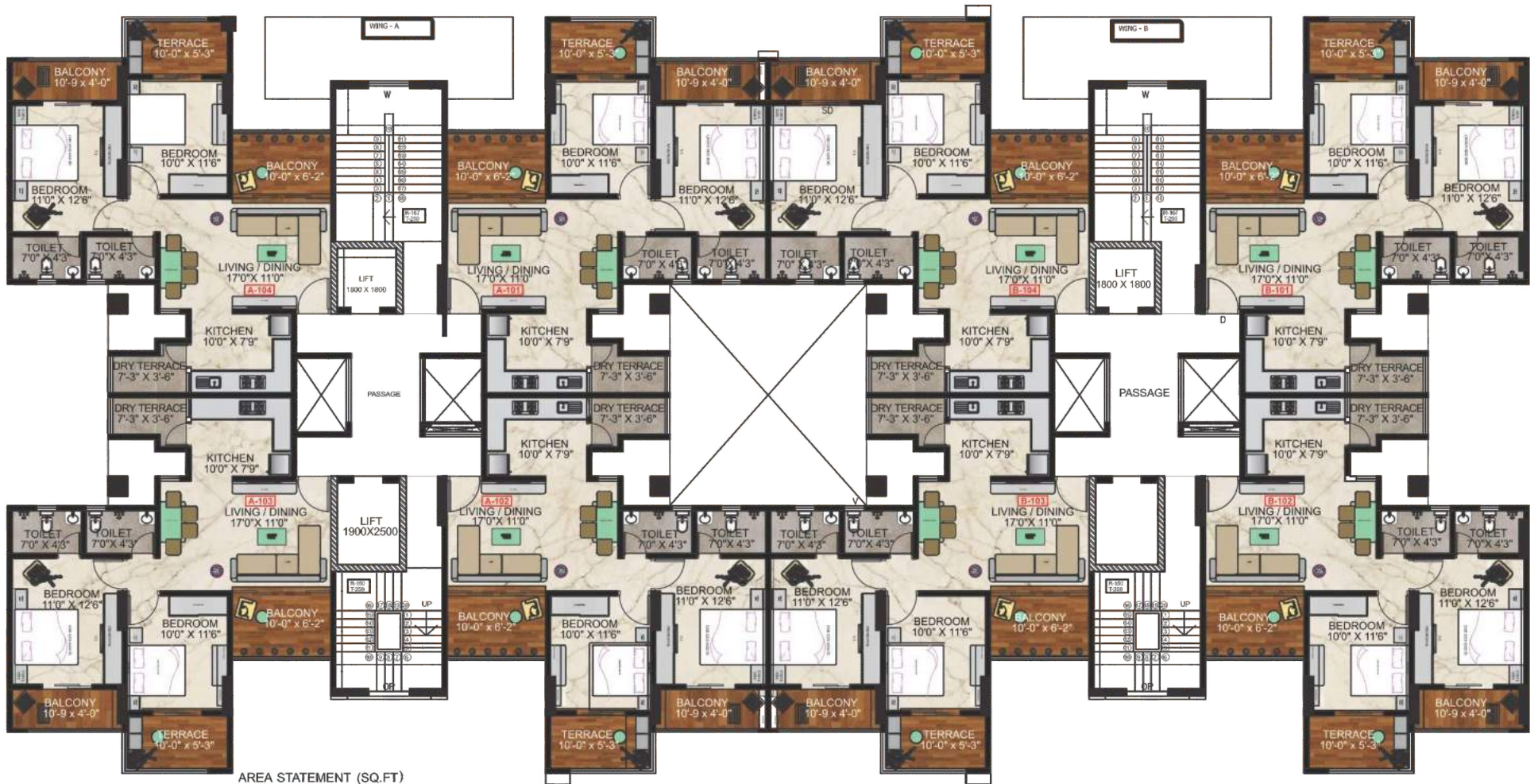


Odd Floor Plan



AREA STATEMENT (SQ.FT)

Floor	Carpet Area	Dry Terrace	Terrace	Balcony (1)	Balcony (2)	Total Carpet Area
Odd	641.10	30.13	52.52	59.74	43.27	826.78





Even Floor Plan



AREA STATEMENT (SQ.FT)

Floor	Carpet Area	Dry Terrace	Terrace	Balcony (1)	Balcony (2)	Total Carpet Area
Even	628.51	31.22	-	59.74	43.27	762.74



